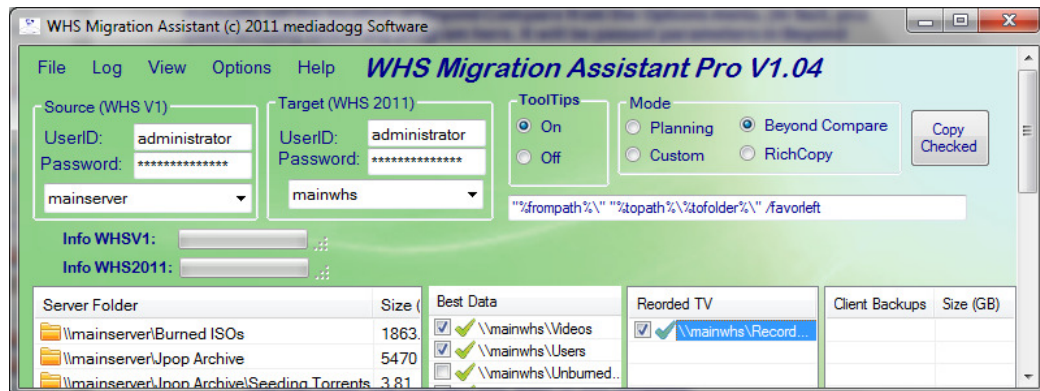


Using Automated Copy (Pro Version)

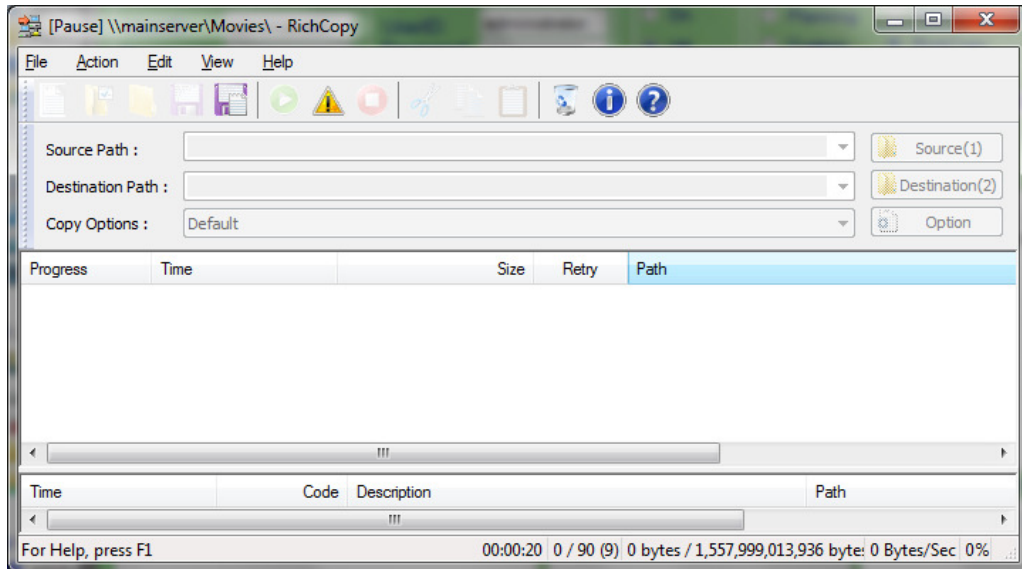
The WHS2WHS program itself does not do any manipulation of your data – no copies, no moves, and most especially, no deletes. However, there is a framework for using your choice of trusted copy tools in the context of the your migration plan. The author personally uses Microsoft Rich Tools (Robocopy follow-on), as well as Beyond Compare. For that reason only, those tools have special hooks built-in, because I originally made WHS2WHS for myself. To use other copy programs, the author has provided a way for you to use your own script (“.BAT” style), and pass pre-formatted paths and other information to that script.

Using one or more of these methods, WHS2WHS will assist you in copying, in the context of your plan:

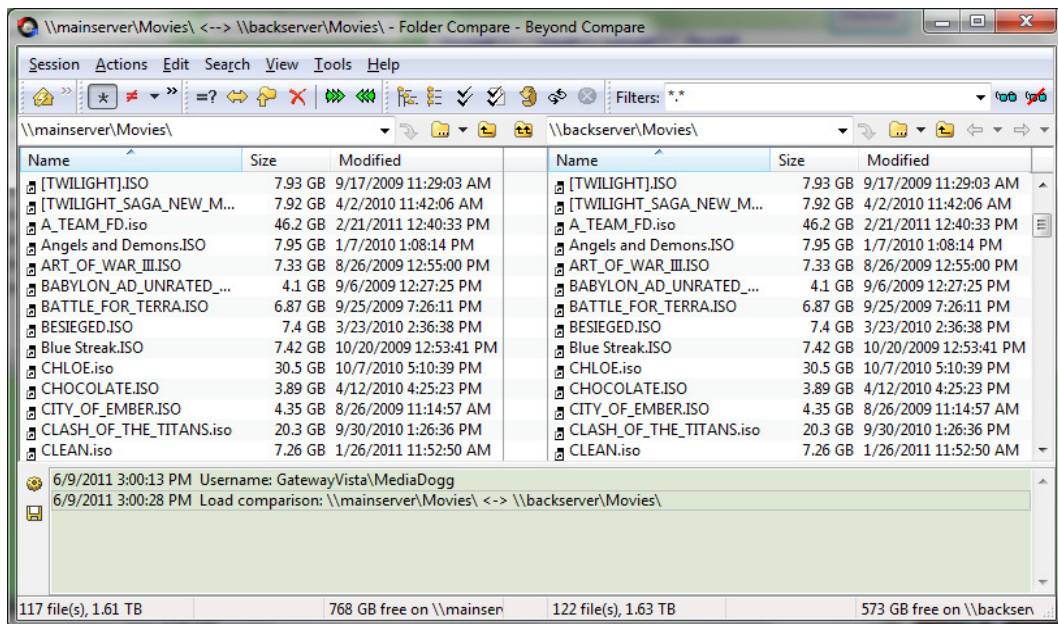
- From Server Share to Server Share, regardless of where WHS2WHS is running
- From Server Share to or from a Sever physical disk, regardless of where WHS2WHS is running. In this case, the physical disks are obviously on the same machine with WHS2WHS.
- In other words, you can use WHS2WHS on WHS V1, WHS 2011 or any other PC in your network.



- **Using Rich Tools:** WHS2WHS searches for the installed copy of RichTools, and selected the correct copy on x64 machines. However, if for some reason the automated discovery does not work, you can manually set the location of the RichTools from the Options menu. (In fact, you could actually select any program here. It will be passed parameters in RichTools format.)



- **Using Beyond Compare:** WHS2WHS searches for the default installation of Beyond Compare. If for some reason this discovery does not work, you can manually set the location of Beyond Compare from the Options menu. (In fact, you could actually select any program here. It will be passed parameters in Beyond Compare format.)



- **Pre-formatted Command Line:** An editable command line is pre-formatted and made available to you prior to the start of the copy process. Once the Copy Checked button is pressed, this command line is used as a template to create parameters to pass to the copy program. For example, the default template for RichTools is:

```
"%frompath%" "%topath%\%tofolder%" /FSD /TSD /TSU /NE /FEF
Thumbs.db;AlbumArt*;Folder.jpg;Desktop.ini
```

For example, if you are copying from \\oldserver\movies to \\newserver\movies:

```
%frompath% = \\oldserver\movies  
%topath% = \\newserver  
%tofolder% = movies
```

You can make any changes you want to this template.

- **Calling you own (".bat") script:** In this case, WHS2WHS calls the script Custom.bat, located in the program installation folder. The sample provided, simply displays the parameters passed to serve as a guide for your programming.



```
ca. C:\Windows\system32\cmd.exe  
Source (WHSU1) Path: "\\mainwhs\Recorded TU"  
Source User: "administrator"  
Source PW: " " "  
Source Dns Hostname: "GatewayUista"  
Target Path (Destination): "\\backserver\Recorded TU"  
Target User: "administrator"  
Target PW: " " "  
Target Dns Hostname: "backserver"  
Target (WHS2011) Drive: "K:"  
Press any key to continue . . . _
```

Once the Copy button is pressed, WHS2WHS formats all of the parameters and presents them for your inspection. Then you select one or more of the commands to execute, or you may cancel the entire copy operation.

